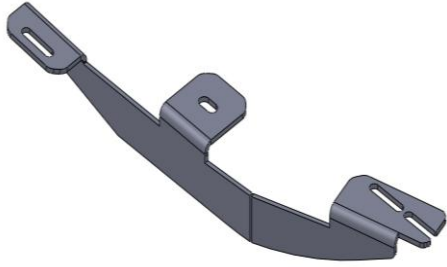
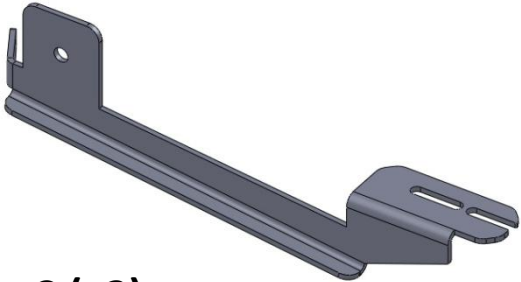




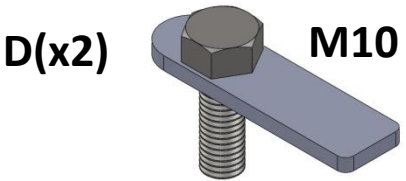
A (x2)



B (x2)

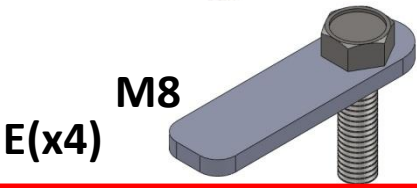


C (x2)



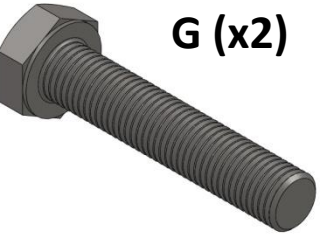
D(x2)

M10



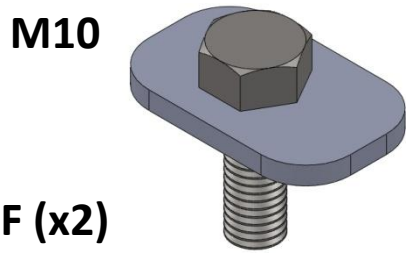
E(x4)

M8



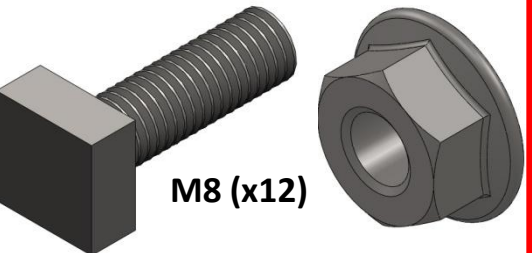
G (x2)

M10

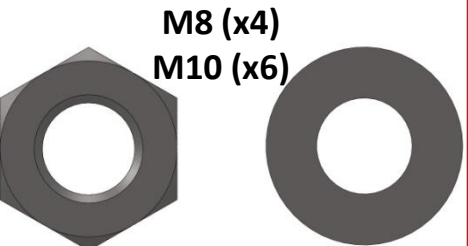


M10

F (x2)



M8 (x12)



M8 (x4)

M10 (x6)



VOLKSWAGEN CADDY 2004 → RUNNING BOARD

- (TR)** MONTAJ TALIMATI
- (GB)** FITTING INSTRUCTIOS
- (F)** INSTRUCTIONS DE MONTAGE
- (P)** INSTRUCOES DE MONTAGEM
- (NL)** MONTAGEHANDLEIDING
- (PL)** INSTRUCJE WBUDOWANIA
- (H)** FELSZERESLESI UTASITAS
- (ENG)** MOUNTING INSTRUCTIONS
- (D)** EINBAUANLEITUNG
- (SWE)** MONTAGEANVISNING
- (CZ)** POKYNY PRO MONTAZ
- (SLO)** NAVODILA ZA INSTALACIJO
- (ESP)** INSTRUCCIONES DE MONTAJE
- (RU)** Инструкция по установке



ERKUL®

Products & Quality

www.erkulauto.com
info@erkulauto.com

Tel: 0090 212 590 19 21
Fax: 0090 212 590 19 22

