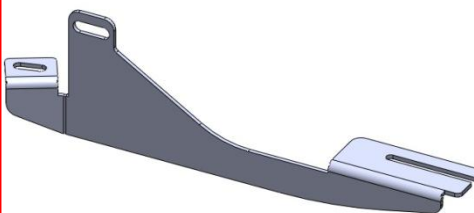
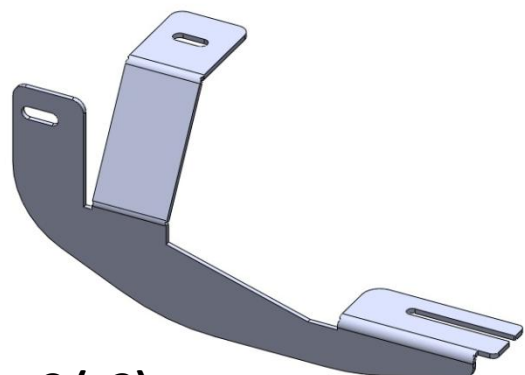


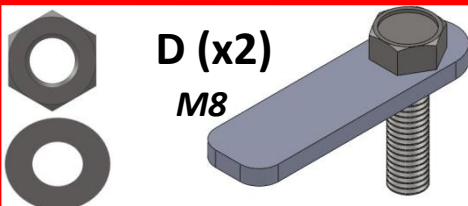
A (x2)



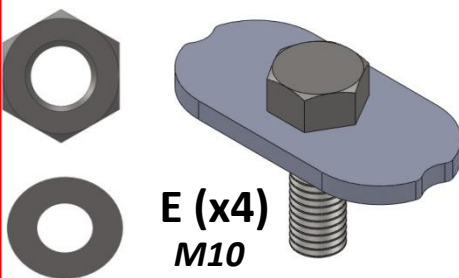
B (x2)



C (x2)



D (x2)
M8



E (x4)
M10



M8 (x12)



M10 (x8)



F (x4)

M10 (x4)



SSANGYOUNG KYRON RUNNING BOARD

- | | | | |
|------------|---------------------------------|------------|--------------------------------|
| TR | MONTAJ TALIMATI | GB | FITTING INSTRUCTIVOS |
| F | INSTRUCTIONS DE MONTAGE | P | INSTRUCOES DE MONTAGEM |
| NL | MONTAGEHANDLEIDING | PL | INSTRUCJE WBUDOANIA |
| H | FELSZERESLESI UTASITAS | ENG | MOUNTING INSTRUCTIONS |
| D | EINBAUANLEITUNG | SWE | MONTAGEANVISNING |
| CZ | POKYNY PRO MONTAZ | SLO | NAVODILA ZA INSTALACIJO |
| ESP | INSTRUCCIONES DE MONTAJE | RU | Инструкция по установке |



A+E

B+D+F

C+E+F

