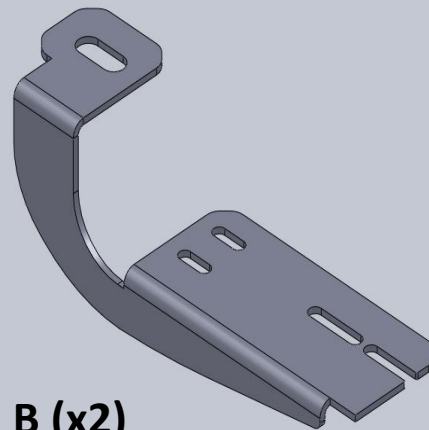
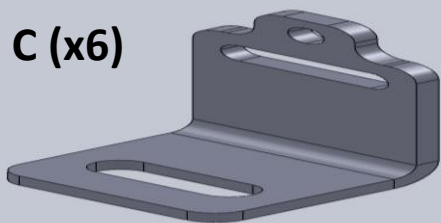


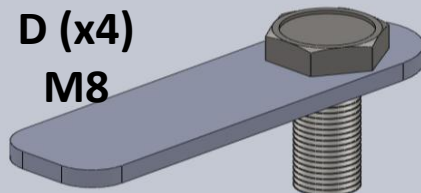
A (x4)



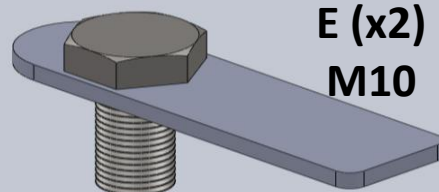
B (x2)



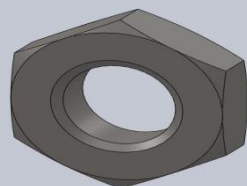
C (x6)



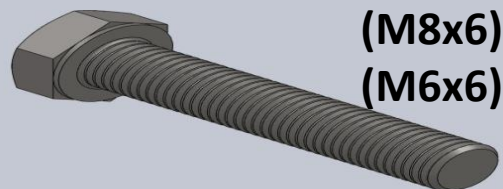
D (x4)  
M8



E (x2)  
M10

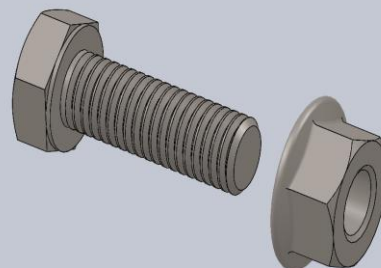
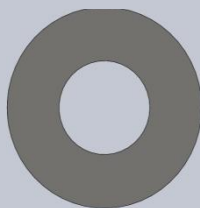


(M8x10)  
(M10x2)



(M8x6)  
(M6x6)

(M8x16)  
(M6x12)



M8 (x12)



## TOYOTA HIGHLANDER 2010 → RUNNING BOARD



**MONTAJ TALIMATI**



**FITTING INSTRUCTIVOS**



**INSTRUCTIONS DE MONTAGE**



**INSTRUCOES DE MONTAGEM**



**MONTAGEHANDLEIDING**



**INSTRUCJE WBUDOANIA**



**FELSZERESLESI UTASITAS**



**MOUNTING INSTRUCTIONS**



**EINBAUANLEITUNG**



**MONTAGEANVISNING**



**POKYNY PRO MONTAZ**



**NAVODILA ZA INSTALACIJO**



**INSTRUCCIONES DE MONTAJE**



**Инструкция по установке**

